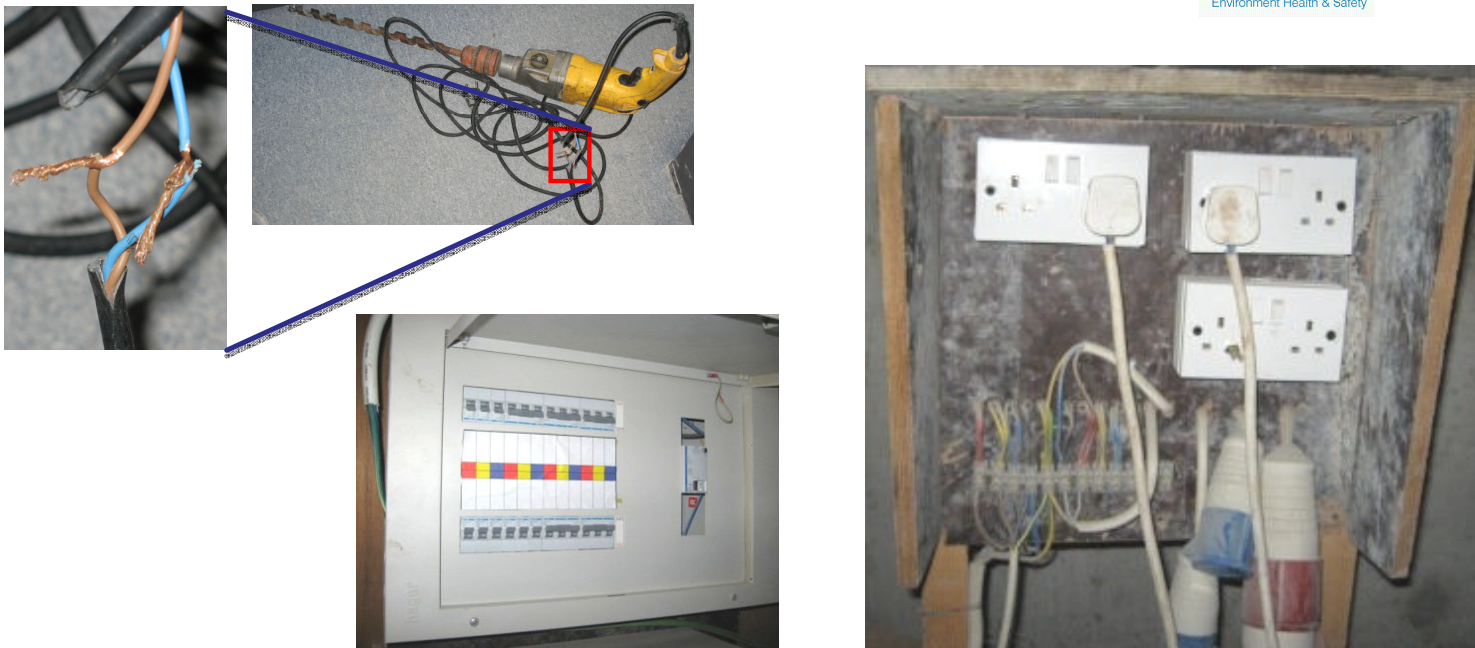


Environment, Health & Safety

Ports, Customs & Free Zone Corporation



SAFETY ALERT

There have been a number of electric shock accidents recently on Nakheel projects resulting in some serious injuries to workers.

Investigation by EHS has identified that supervisors and workers are often complacent about the risks associated with electricity. In one recent accident an injury was caused by a poor connection as seen above where wires are just twisted together. In another accident an excessive 100 amp circuit breaker was fitted to a feed for electrical hand tools, there was no Residual Current Device (RCD) fitted exposing workers to extreme danger.

Contractors must ensure that only competent electricians are employed to install electrical supplies and circuits. Contractors are strongly advised to review their procedures for the installation and use of electricity on site. The following points must be given consideration:-

- ➔ *Reduce the voltage and reduce the risk, wherever possible 110 volt tools and equipment must be used.*
- ➔ *If 240 volt is used where a reduced voltage is not available then a 30 mA Residual Current Device (RCD) must be fitted to the circuit..*
- ➔ *All electrical installations must be made by a competent electrician and tested before use. All connections must be made with proper plugs and sockets.*
- ➔ *Damaged leads and tools must be removed from service. The supervisor must ensure that regular checks are carried out on all electrical tools and equipment.*
- ➔ *Workers must receive regular safety briefings to ensure they are reminded of the work hazards involved with electrical supplies on construction projects and how work is to be carried out safely.*
- ➔ *Under no circumstances are workers to interfere with electrical installations or make any alterations to electrical tools or leads.*

For further information contact:
Environment, Health and Safety
Tel. No. (04) 8040318

Safety Alert 022 220806